

A photograph of a steep, rocky hillside in the Alps, featuring terraced vineyards. A cable car system is visible, with a car suspended from a cable. In the background, a white building with a red roof sits atop the hill. The sky is clear and blue.

Terraced Landscapes of the Alps

Drago Kladnik

Anton Melik Geographical Institute ZRC SAZU

ISCAR Workshop, September 7th, Tolmin, Slovenia

EUROPE

Legend



Terraced areas



Terraced areas included in the
UNESCO World Heritage List

0 100 200 300 400 km

Made with Natural Earth
© 2017, ZRC SAZU Anton Melik Geographical Institute





































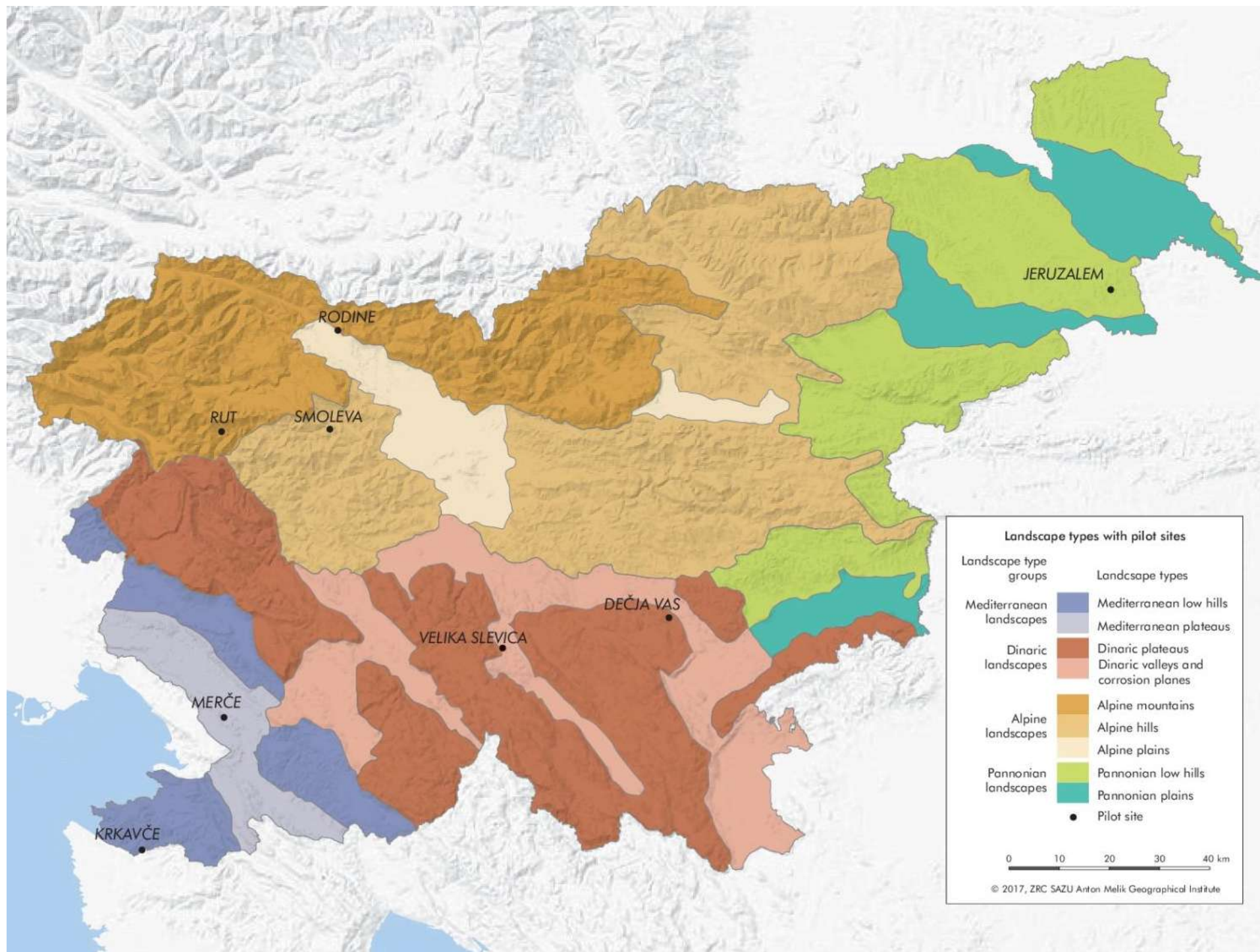


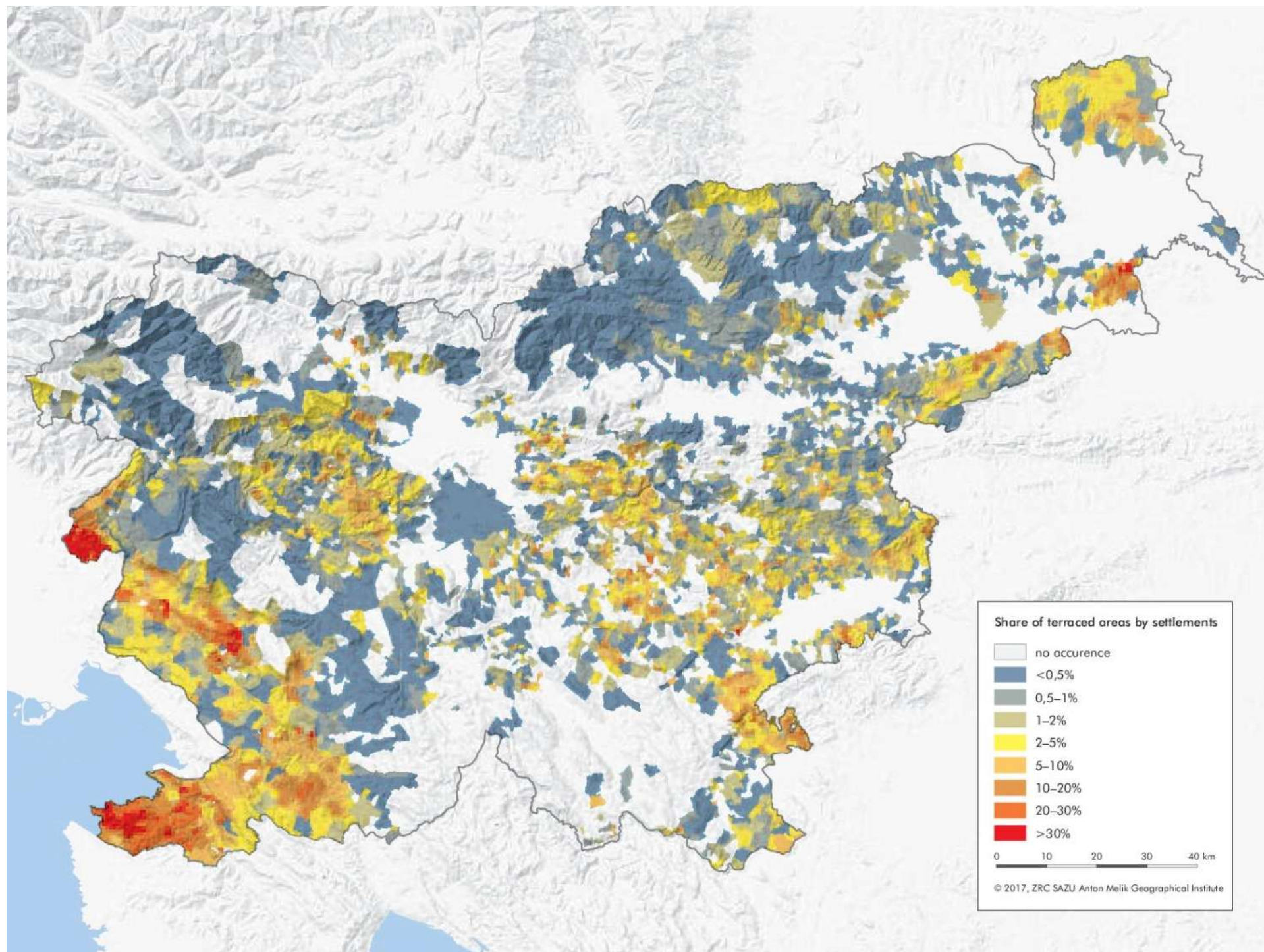












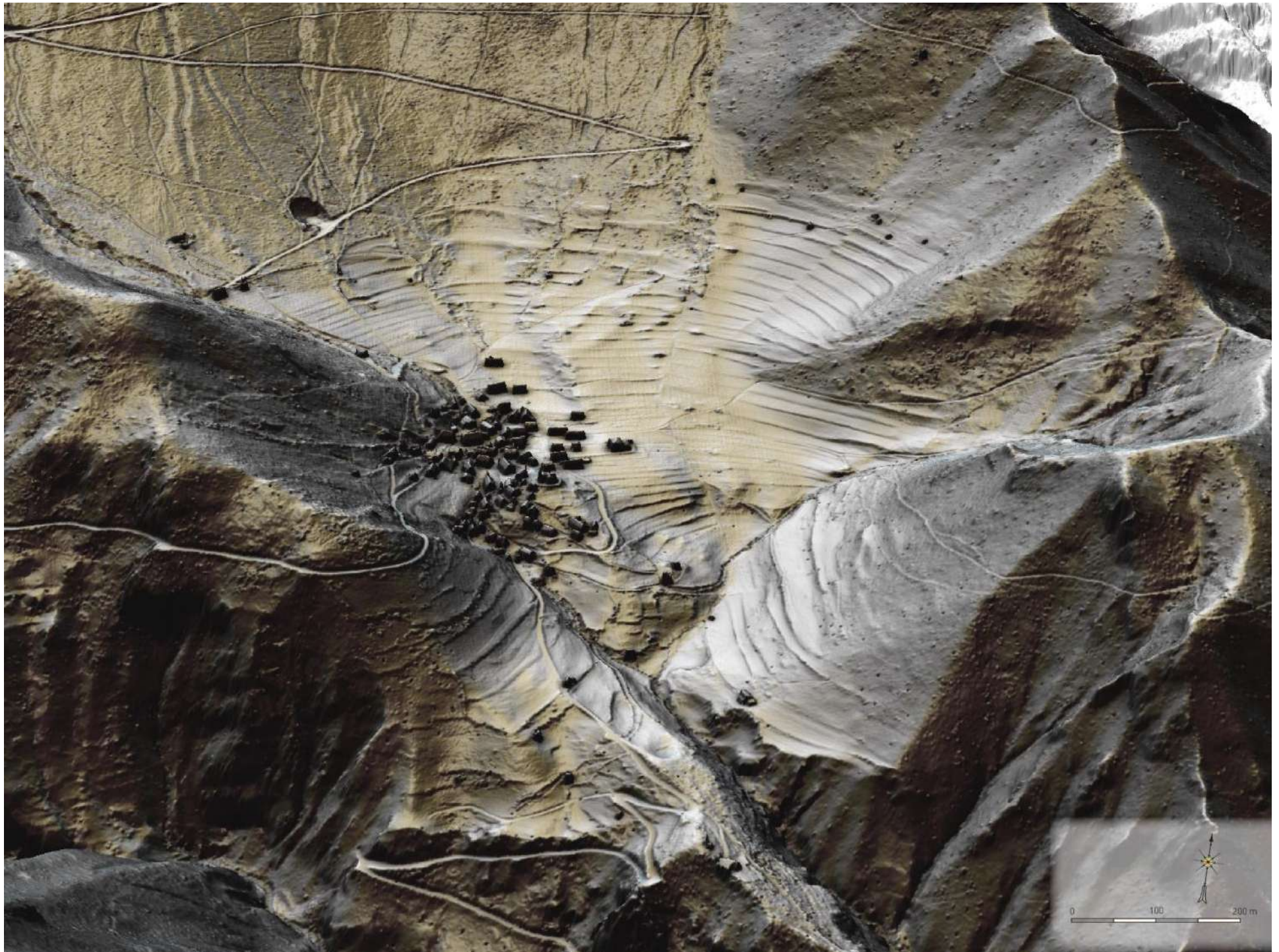


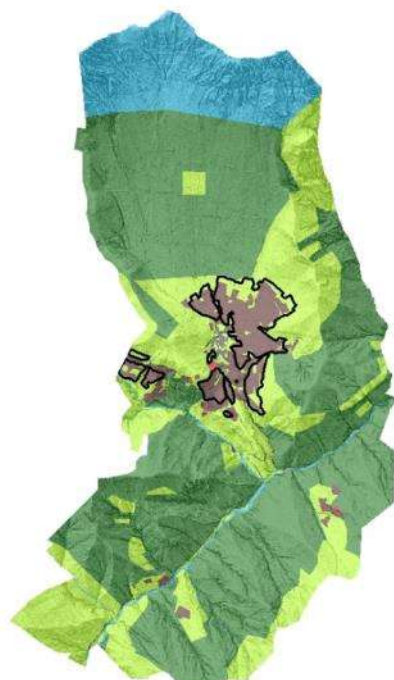






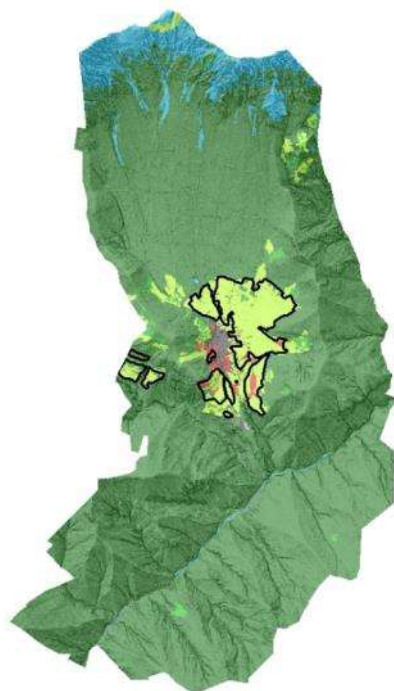






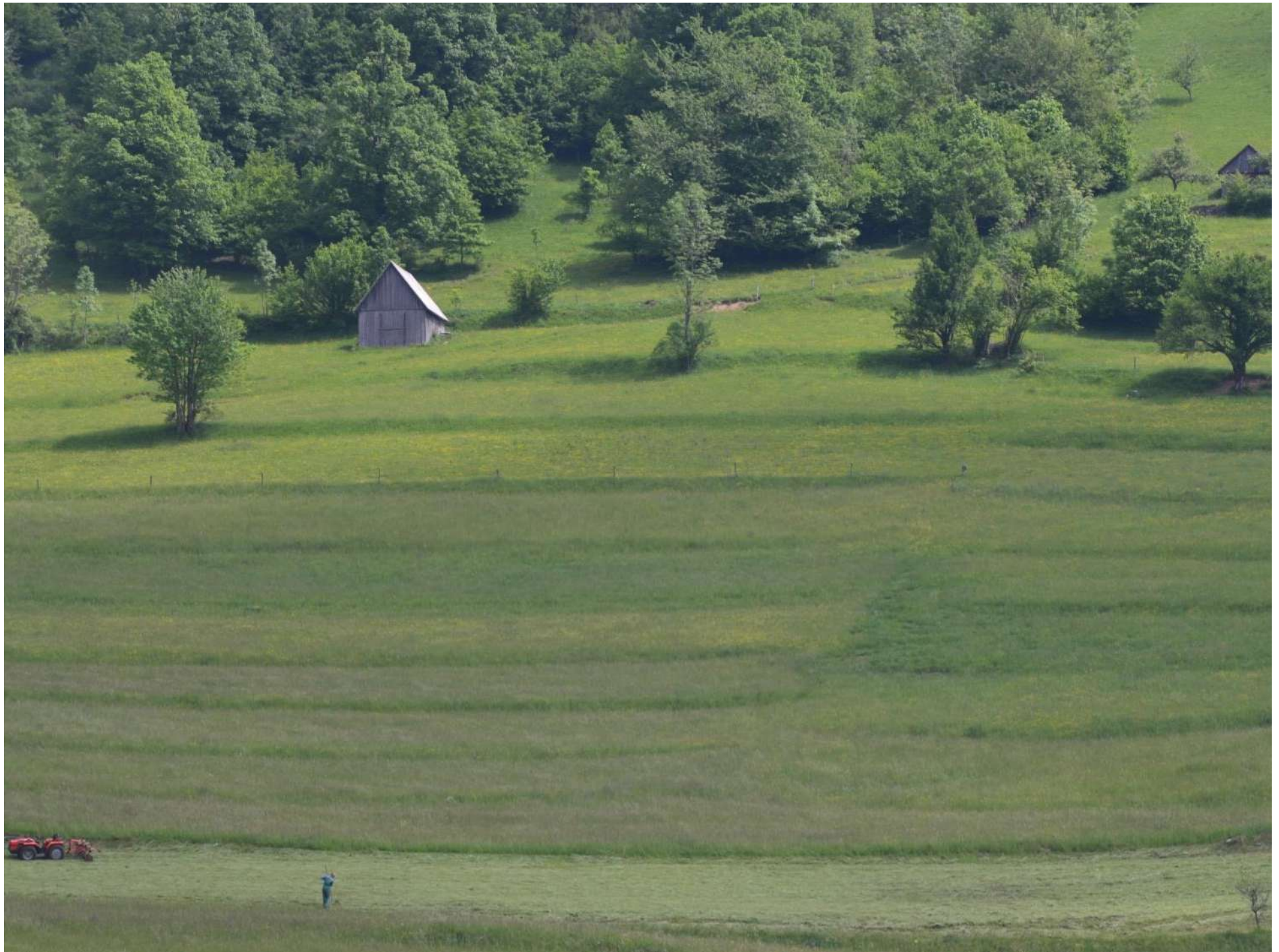
Raba tal

- njive
- sadoxnjaki
- travniki in pašniki
- gozd
- pozidana zemljišča
- drugo
- terasirano območje



Raba tal

- njive
- sadoxnjaki
- travniki in pašniki
- neobdelana kmetijska zemljišča
- kmetijska zemljišča v zaraščanju
- gozd
- pozidana zemljišča
- drugo
- terasirano območje

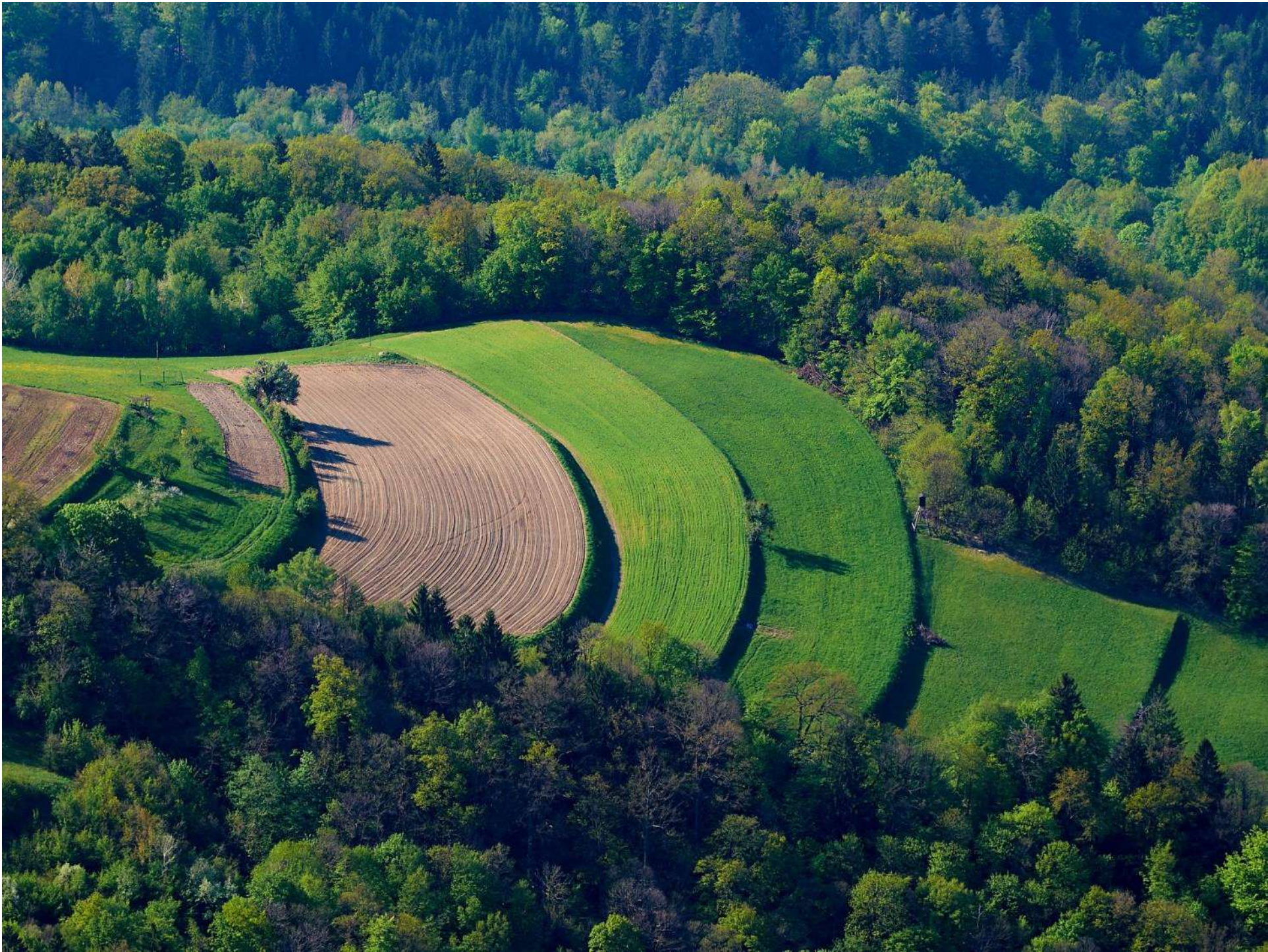
















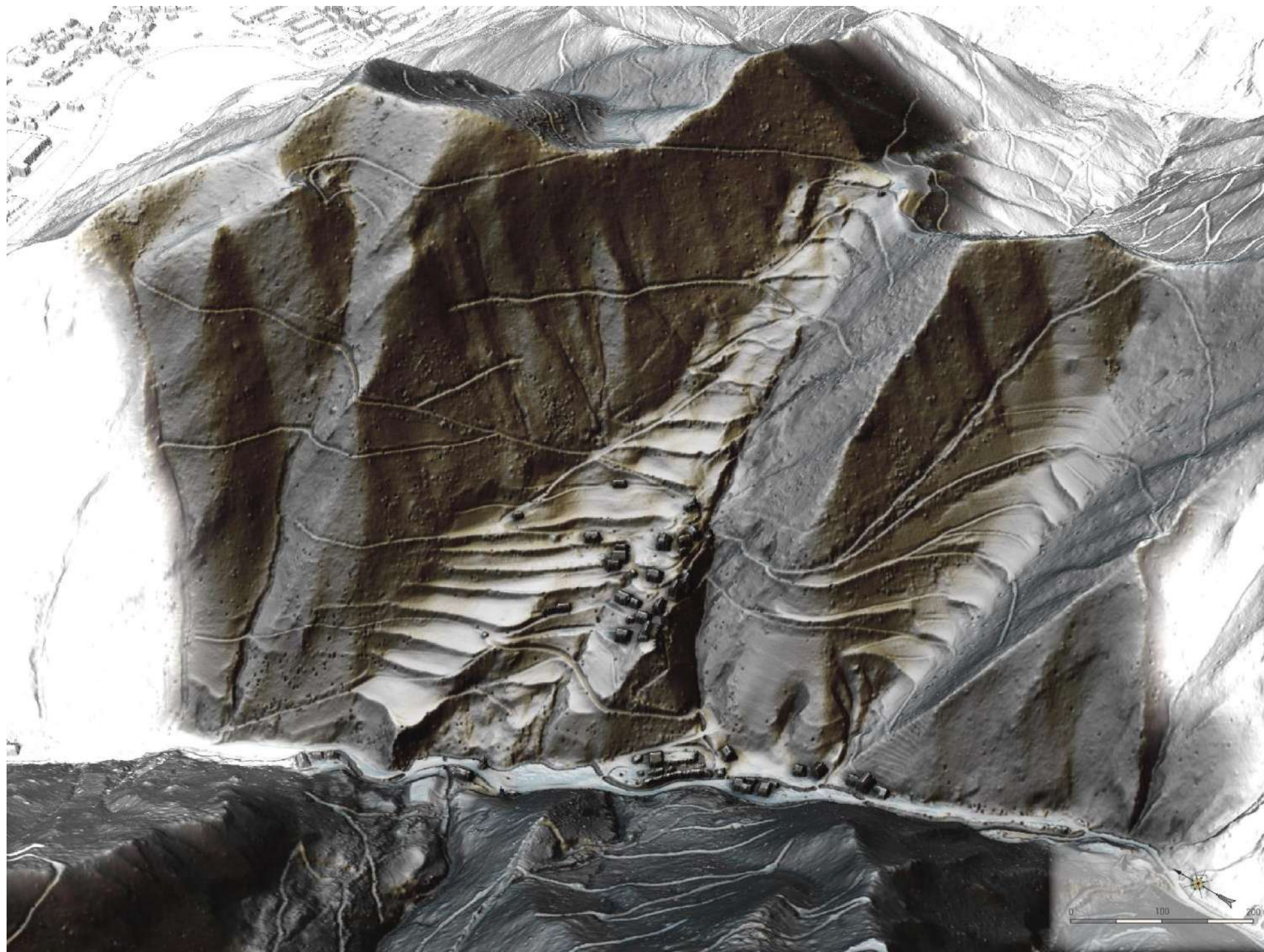








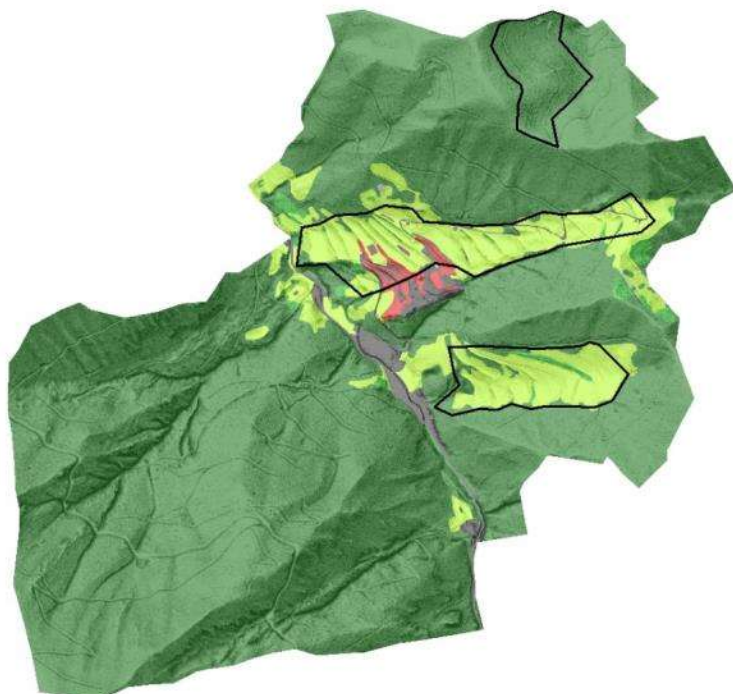






Raba tal

- njive
- sadovnjaki
- travniki in pašniki
- gozd
- pozidana zemljišča
- drugo
- terasirano območje



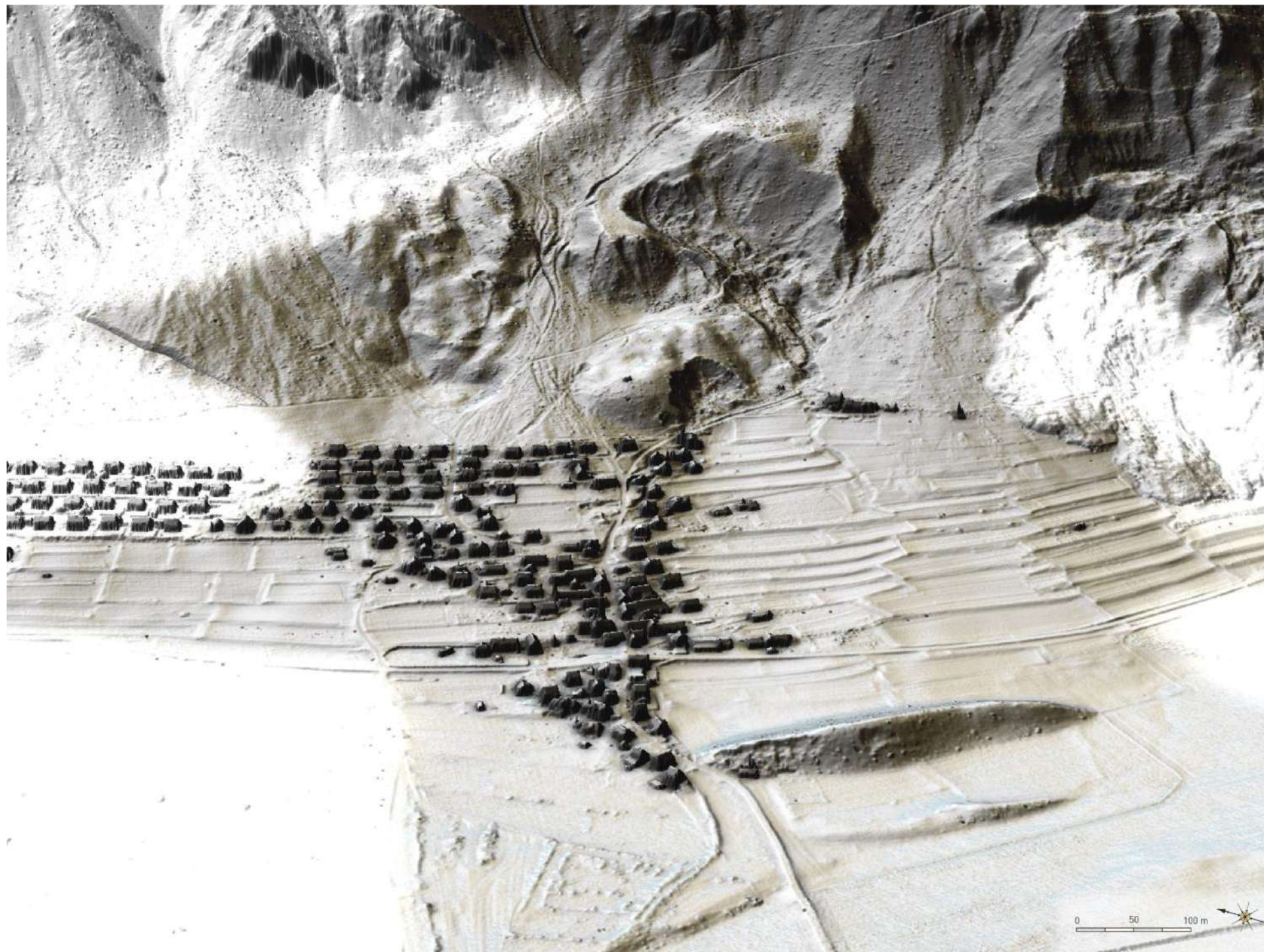
Raba tal

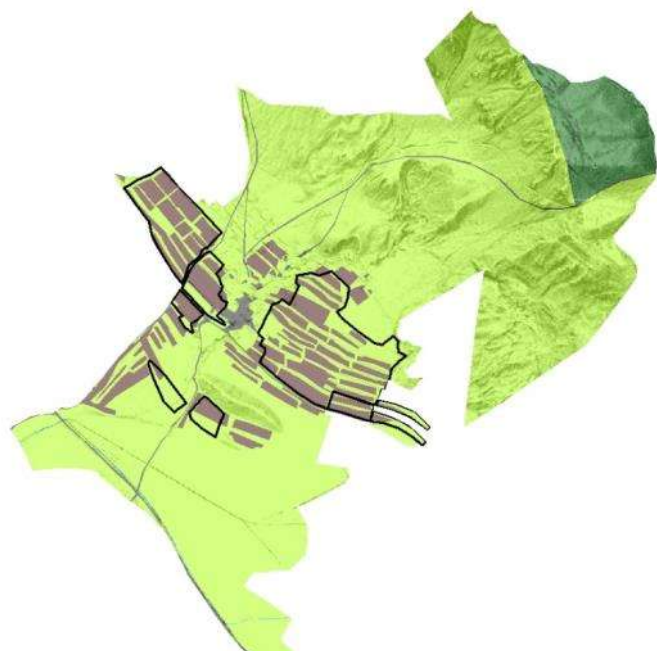
- njive
- sadovnjaki
- travniki in pašniki
- neobdelana kmetijska zemljišča
- kmetijska zemljišča v zaraščanju
- gozd
- pozidana zemljišča
- terasirano območje





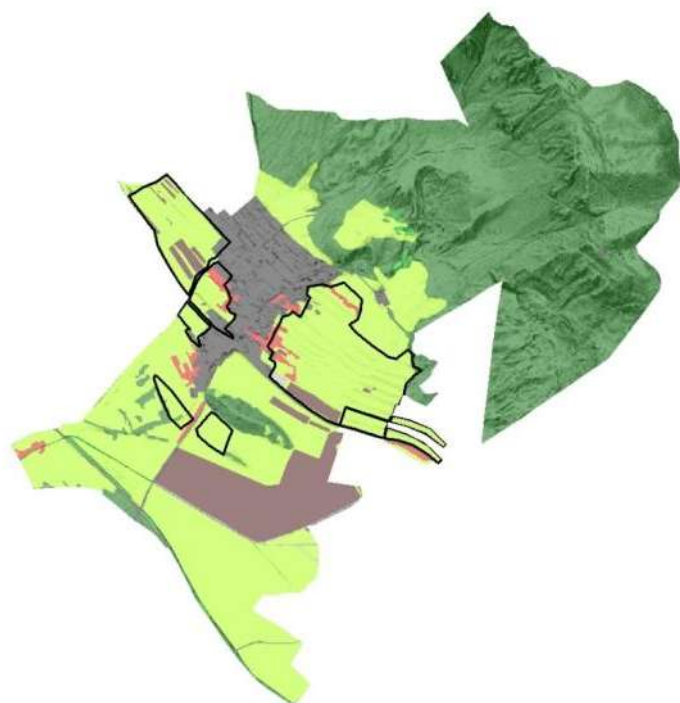






Raba tal

- njive
- travniki in pašniki
- gozd
- pozidana zemljišča
- drugo
- terasirano območje



Raba tal

- njive
- sadovnjaki
- travniki in pašniki
- neobdelana kmetijska zemljišča
- kmetijska zemljišča v zaraščanju
- gozd
- pozidana zemljišča
- terasirano območje



